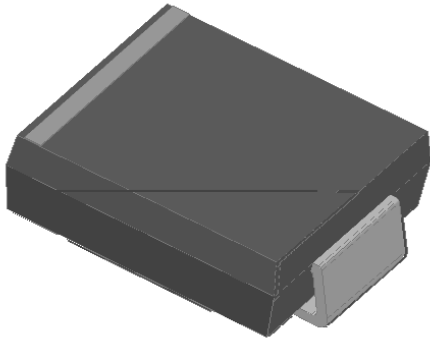




SS315Q THRU SS320Q

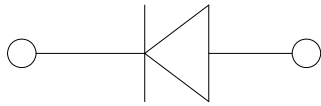
RoHS
COMPLIANT

Surface Mount Schottky Rectifier



Features

- " *XDUGULQJ IRU RYHUYROWDJH SURWHFWLRQ
 - " /RZ SRZHU ORVVHV
 - " ([WUHPHO\ IDVW VZLWFKLQJ
 - " +LJK IRUZDUG VXUJH FDSDELOLWA
 - " +LJK IUHTXHQF\ RSHUDWLRQ
 - " 0HHWV 06/ OHYHO SHU - 67' /) PD[LXP
 - RI f&
 - " 3DUW QR ZLWKHQVLS\$ (4 XxP DQG -(6
- Polarity:** &RORU EDQG GHQRWHV WK



Maximum Ratings

PARAMETER	SYMBOL	UNIT	SS315Q	SS320Q
Reverse Voltage	V_{RR}	V	66	66
Forward Current (Continuous)	I_{FM}	A		
Forward Current (Pulse)	I_{FM}	A		
Forward Current (Average)	I_{FA}	A		
Forward Voltage	V_{FM}	V		
Reverse Current	I_{RM}	A		
Power Dissipation (Continuous)	P_{DM}	W		
Power Dissipation (Pulse)	P_{DM}	W		
Storage Temperature	T_{STG}	°C		
Operating Temperature	T_{OP}	°C		

Electrical Characteristics

PARAMETER	SYMBOL	TEST CONDITIONS	TYP	MAX	UNIT
Forward Voltage	V_{FM}	$I_F = 100\text{mA}$	0.7	-	V
Reverse Current	I_{RM}	$V_R = 66\text{V}$	0.7	-	µA
Forward Voltage	V_{FM}	$I_F = 100\text{mA}$	0.7	-	V
Reverse Current	I_{RM}	$V_R = 66\text{V}$	0.7	-	µA
Forward Voltage	V_{FM}	$I_F = 100\text{mA}$	0.7	-	V
Reverse Current	I_{RM}	$V_R = 66\text{V}$	0.7	-	µA



SS315Q THRU SS320Q

Thermal Characteristics

PARAMETER	SYMBOL	UNIT	SS315Q	SS320Q
7KHUPDO 5HVLVWDQFH	5 - s	-		
	5 - /			

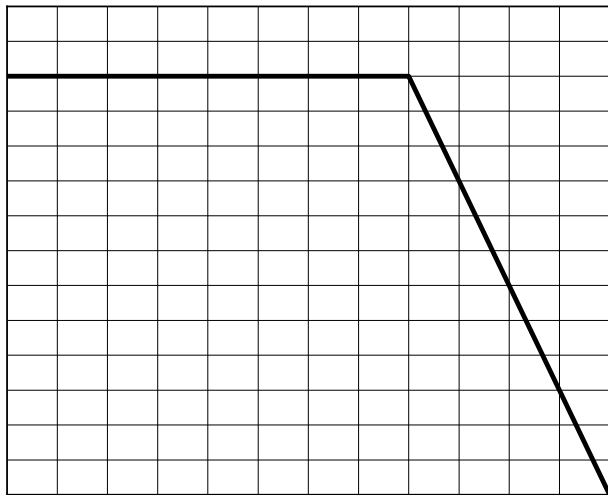
1RWH

7KHUPDO UHVLVWDQWR DUFER HQXW FVLRQ RDBGM RRFK QWRIG WQ 3 & % ZLWK [U SDG DUFHDV PP

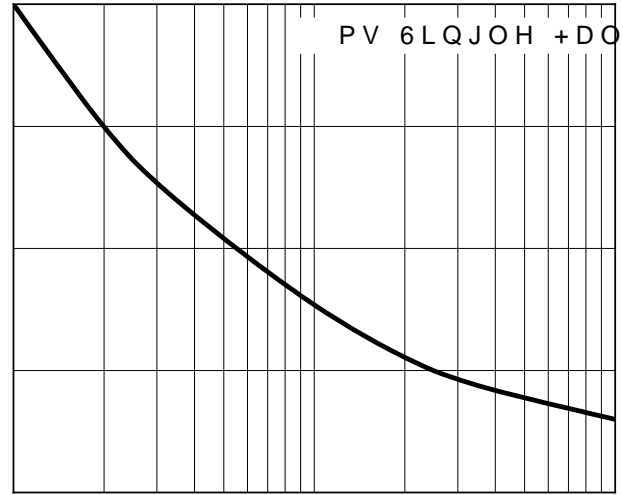
Ordering Information

35() (5(' 3 1	3\$&.\$*(&2'('	81,7 :(:,*+7 J	0,1,080 3\$&.\$*(SFV	287(5 &\$5721 48\$17,7< SFV	'(/,9(5< 02'('
66 4a66 4)	\$SSUR[LPDVH			

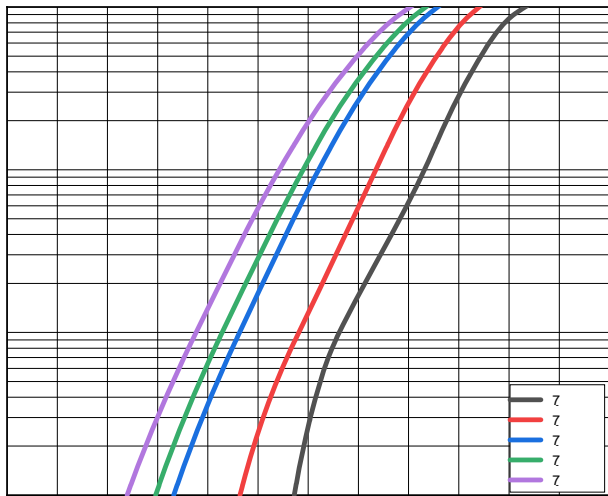
Characteristics



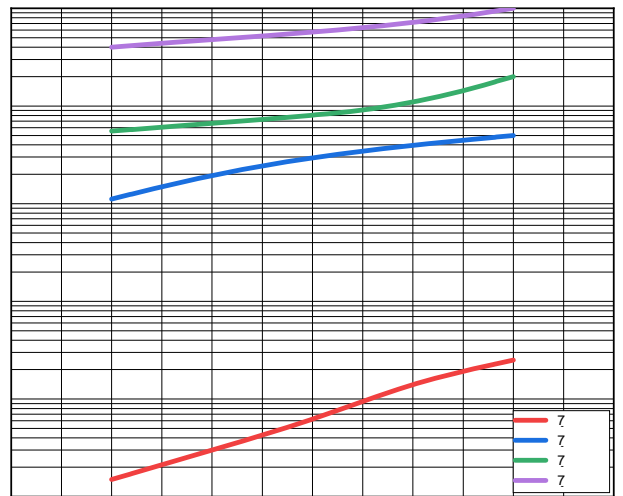
/HDG 7HPSHUDWXUH



1XPEHU RI &\FOHV DW +]



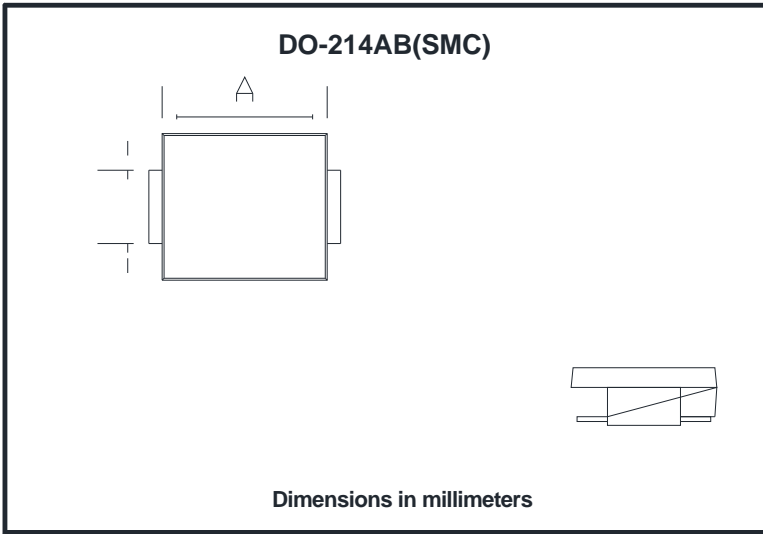
,QVWDQWDQHRXV)RUZDUG 9ROWDJH 93HUFHQW RI 5DWHG 3HDN 5HYHU





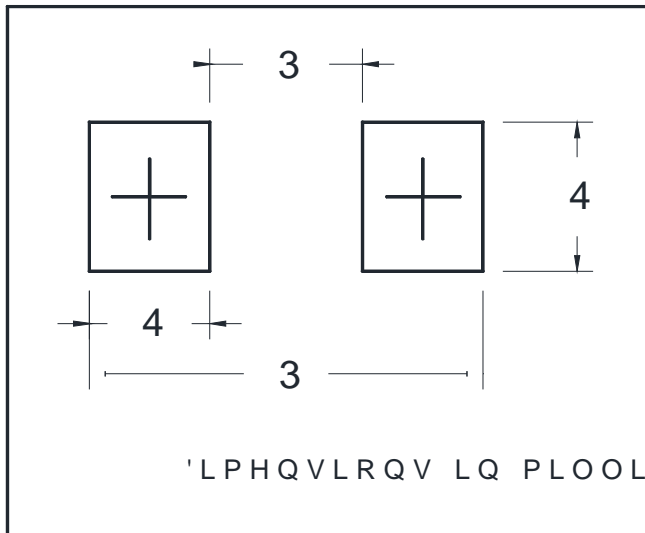
SS315Q THRU SS320Q

vOutline Dimensions



'2	\$%	60&
'LP	0LQ	0D
\$		
%		
&		
'		
(
)		
*		
+		

Suggested pad layout



Dim	Typ
3	
3	
4	
4	



SS315Q THRU SS320Q

Disclaimer

7KH LQIRUPDWLRQ SGRV#QMG LG IRWLV#DQJJKRKH BQJMLH (OHFWURQLF 7HFKRRO
ULJKW WR PDNH FKDLFHVRZLWKRXWSKRLS\URDG\KFRQ\ RGLWSOD\HG KHUHLQ WRGLFVSLWRQ